

Kidz to Adultz North

Thursday 14th November 2019

9.30am - 4.30pm

EventCity, Barton Dock Road,
Manchester, M17 8AS



EVENT SHOWGUIDE



Kidz to Adultz Exhibitions

Kidz to Adultz is a trademark registered to Disabled Living, Manchester. Established in 1897, Disabled Living, Charity registered with the Charity Commission for England and Wales. Registered Charity Number 224742

newlifeable

An equipment solution for disabled children.

Helping children realise
their potential with quality,
refurbished disability equipment
previously destined for landfill.



Pushchairs



Beds & Cots



Wheelchairs



**Clearance Items
and much more!**



Mobility Scooters



Specialist Seating



Walking Aids

We offer items to families, statutory services and other
charities for purchase.

Supporting disabled children from birth to 19 years old.

Buy online at newlifeable.co.uk



newlifeable@murraysmedical.co.uk



01527 871924

Copyright 2018 newlifeable | All Rights Reserved. Operated by the UK and Irelands leading equipment supplier Murray's Medical Equipment Ltd. Working in partnership with Newlife the Charity; the UK's largest provider of specialist equipment to disabled children, Registered Charity Number 1170125 in England and Wales.

Making the most out of your visit at Kidz to Adultz North

We've rounded up some really useful tips to help you get the most out of your visit at our Kidz to Adultz event.

Try out equipment

The event is a one stop shop offering visitors the chance to access the most up to date advice and information on equipment, mobility aids, funding, seating, beds, communication aids, continence, sensory, transition, education, housing, employment, accessible vehicles, sports, leisure and more. So do visit as many stands as you can.

Talk to the experts

The seminar speakers and many other specialised professionals will be on hand throughout the day on their stands in the exhibition hall. Disabled Living's team of experts (Occupational Therapists and Clinical Advisors) will also be available at the event and afterwards, and can help with equipment and product advice, and all aspects of the event. The Team are easily recognisable by their Kidz to Adultz shirts and are located in the main registration area and on stand DL1– see floor plan centre pages.

FREE Seminars running alongside the exhibition

An opportunity for professionals to boost their CPD and gain credits, and for parents, carers and individuals to update their knowledge on a wide range of really hot topics and issues. You can view the seminar timetable on pages 5 & 6.

Children welcome

It's so important for children and young adults to have their say. Having the right equipment can make a massive difference to an individual's day to day life! Many schools and colleges do permit leave for children to attend the event as an educational visit and as part of their development.

It's fun....and it's FREE

There are always lots of fun activities for visitors to interact with and lots of prizes on offer too so don't miss out! More information on pages 3 & 4.

Are you an individual going through the transitional period? What would you like to see more of at our Kidz to Adultz Events?

Do you have a child, who is going through the transition to adult services? We would love to hear about your experience whether positive or negative and if you encountered any barriers

Are you a company or organisation who supports the transitional age group and want to be a part of the Kidz to Adultz experience? Please do get in touch



For more information on any of our Kidz to Adultz Events contact:- The Kidz to Adultz Team at Disabled Living
Email: info@disabledliving.co.uk Tel: 0161 607 8200 www.kidzexhibitions.co.uk #kidztoadultz

Important Event Information

Seating & Catering

Located in the reception area and to the rear of the exhibition hall. Here you can purchase a selection of hot and cold food and drinks. See floor plan on the centre pages of this guide.

First Aid

'First Aiders' are present at the event. If you require first aid or medical assistance please report to the Organisers at the main registration desk or alert a member of the Kidz to Adultz Team who can be clearly recognised by their Kidz shirts.

Evacuation

If the alarm bells continuously sound or an announcement is made a decision has been made to evacuate the building. Leave the building using the nearest fire exit, or as instructed by the fire marshals or members of the Kidz to Adultz Team.

Accessible Toilets

Accessible toilets are past the Kidz to Adultz main registration area on the left. There is also an accessible toilet in the Mobiloo changing facility —see below.

Help & Information

If you require help on any aspect of the event, finding companies, equipment, details on seminars, toilets, changing facilities etc please ask at the Kidz to Adultz Registration area or on **Disabled Living's stand DL1** in the main exhibition hall. Our team are easily recognisable by our Kidz shirts and tee shirts.

Changing Places Facility

A high specification Changing Places toilet facility is located through the Kidz to Adultz main registration to the left. The facility includes: a height adjustable changing bench and hoist system that covers the complete 16sqm floor space. Radar key required, please ask at registration.

Important hoist and sling information:-

Hoist users must bring their own sling with them. This is for your own safety and convenience – and to prevent any cross-contamination between different users.



Mobiloo Changing Facility Located at the back of the exhibition hall.

The Mobiloo is equipped with top of the range specialist equipment:-

- Tail Lift with a 1.6 metre platform.
- Adjustable height changing table.
- Electric hoist, allowing access to all areas of the Mobiloo.
- Toilet with retractable grab rail to each side.

Important hoist and sling information:-

Hoist users must bring their own sling with them. This is for your own safety and convenience – and to prevent any cross-contamination between different users.



★ Funders ★

Look for the green stars on the floor plan—centre pages.



Stand C2 - Provides funding for essential community equipment such as beds, buggies, wheelchairs, seating systems and much more. www.newlifecharity.co.uk



Stand V1 - Exists to improve the lives of children all over the UK who are affected by disability, disadvantage and ill-health. They provide funding for wheelchairs and specialist equipment to families, hospices and schools along with specially adapted, accessible transport and memorable experiences for young people aged 0 - 18. www.variety.org.uk



Stand V2 - A charity who give grants to children of families who work, or have worked in the past nine years, in the Fashion and Textile industries. A significant number of our larger grants go towards funding equipment, education or therapy for children with disabilities. www.ftct.org.uk



Stand V3 - The UK's largest charity providing grants to families raising disabled or seriously ill children and young people. Their grants are for a wide range of items including family breaks, clothing, bedding, kitchen appliances, computers and tablets. www.familyfund.org.uk

Fun and Features

Free Prize Draw

By attending the event you will automatically be entered into the draw for a chance of winning a day out at the below attractions!



2 Tickets



2 Adults & 2 Children



2 Adults & 2 Children



£40 Voucher



2 Adults & 2 Children

Balloon Competition

Find 10 Kidz to Adultz Balloons located on various stands for your chance to win a £50 voucher!

Ask at registration for a form.



Activity Area

Join LUSU Sports and British Wheelchair Basketball in the activity area for a range of activities including a Mini Circuit, Foam Rockets, A shooting Challenge and more!

Santa's Grotto

Don't forget to visit Santa's Grotto at the back of the exhibition hall.

Kindly supported by the League of Jewish Women, North West Region.



Don't forget to visit our Innovation Hub supported by Remap and Pods Play!

Tell us about your ideas for products and equipment you would like to see in the future!



Free CPD & Topical Seminars



Boost your CPD by attending one or more of the FREE, accredited seminars taking place. Seminars are of interest to families, carers, individuals and professionals. Entry is FREE on a first come, first served basis. Seminar rooms are located in the main exhibition hall — see floorplan on the centre pages. Children Welcome.

Seminar Room 1

10.30am - Bathing and sleeping – joining the dots

This seminar focuses on the link between bathing and good sleep and how a good night-time routine can improve sleep for children, their family and carers. It will incorporate both professional and personal experiences and finally it will reflect on bathing as an occupation to support clinical reasoning and evidence based practice.

Objectives:

- Develop understanding of sleep and bathing as occupations
- Explore research that links bathing and sleep patterns
- Discuss implications of bathing research for our clients
- Reflect on impact for carers of children with disturbed sleep patterns or challenging behaviours
- Greater understanding of supportive legislation

Adam Ferry, Occupational Therapist, The OT Service Stand C3



11.30am - Manual handling in the home: challenges and choices

This seminar is aimed at those working with families in their own homes, where ideal manual handling may be difficult to achieve.

Delegates will:

- Examine the challenges that we often face, such as our responsibilities when families choose not to accept our advice and recommendations
- Review the support available through publications from the RCOT and CSP
- Consider typical environmental and practical challenges, such as working on a double bed
- Identify possible practical solutions to these challenges

Elizabeth Hallows, Chartered Physiotherapist and Manual Handling Advisor



1pm - How to manage the transition from child to adult with a neuromuscular condition

This seminar is aimed towards individuals living with a neuromuscular condition, parents of children with the condition or OTs and physios who are supporting individuals with neuromuscular conditions. Getting them to think and reflect on what is needed in order to make the transition to adulthood with a neuromuscular condition possible, but most importantly, fun, hard work and reward!

It will help to understand why attitude, determination and commitment is so fundamental to transitioning from a child to an adult with a neuromuscular condition and what can be achieved if done correctly.

Learning outcomes:

- The need for positive mental attitude and how to stay positive
- Accepting the condition, and being determined on how to influence your future
- Staying committed to yourself and the support network around you

Josh Wintersgill, Founder and Director, easyTravelseat Stand E7a



2pm - Education, health and care plans – what EHCPs are, the EHCP process and how to appeal if you're not happy with an EHCP

This seminar will deal with what EHCPs are, the EHCP process and how to appeal if you're not happy with an EHCP.

The presentation will cover:

- The purpose and content/structure of an EHCP (including a summary of the different sections)
- The process for obtaining an EHCP
- Timeframes and deadlines
- Requesting an EHC needs assessment
- The process of the assessment
- The draft EHCP
- Finalising the EHCP
- Maintenance of the EHCP and the review/re-assessment process
- A summary of grounds for appeal and the appeal process.

Rachel Gibby, Solicitor, CL Medilaw Stand A13

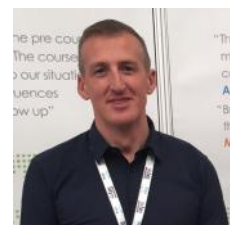


3pm - The hitch-hikers guide to reasonable force

Humans holding other humans has always been a contentious and somewhat taboo subject. Doug Melia will take you all on an interstellar journey through the legal, medical and operational framework for managing the behaviours that challenge.

Visiting human rights principles for the elderly, for small children and with a flyby of considerations that need to be made for SEN, Learning difficulties or for those who have disabilities. The UK is a country that isn't short on guidance and Doug will explain how within the hierarchy of law to safely risk assess physical interventions, which equipment can aid with personal care and how we should be reporting and recording incidents where interventions have taken place.

Doug Melia, Use of force specialist, Safer Handling



Seminar Room 2

10.30am - Communicating without speech: an introduction to alternative communication

Do you support a child or young person who finds speaking difficult? This seminar will explain how we can help those without speech to communicate effectively.

Alternative and Augmentative Communication (AAC) can be used instead of or add to speech. It includes pictures, symbols, signs or more complex techniques involving technology.

The session will be led by Olly Robinson, Speech and Language Therapist at Seashell Trust. Olly will draw out key lessons from his experience of using AAC at a school for children with complex needs. He will introduce different types of AAC and explore strategies for implementing them.

Olly Robinson, Speech and Language Therapist, Seashell Trust Stand V18



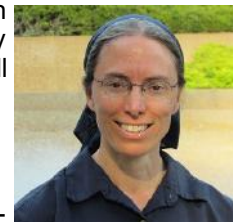
11.30am - Promoting physical activity for social engagement and health

Children and adults with significant physical disabilities are often relegated to the side-lines of life, with passive positioning that results in worsening of deformity and general health. The field of therapy widely recognises that opportunities for physical activity can bolster health and well-being. This session will provide current knowledge to support effective parent and therapist decision-making.

Learning objectives:

- Explore research concerning detrimental effects of immobility for individuals with neurological impairment
- Recognise benefits of upright positioning and mobility for function and participation in a variety of day-to-day environments
- Discuss solutions to enable opportunities for physical activity in home, school and community

Lori Potts, PT Physical Therapist, Rifton Stand C1



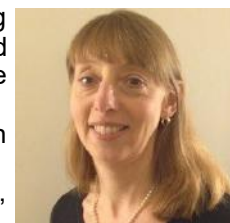
1pm - Toilet training children with autism and other developmental disabilities

Toilet training is an area of child development that most parents find stressful, with much conflicting information. However, it is important for all children's independence, self-esteem and socialisation and quality of life. With the appropriate support many children with additional needs can toilet train at the same age as their typically developing peers.

This seminar will discuss the importance of toilet training, when to start and will make suggestions on programmes that support children with developmental disabilities, including autism.

This seminar is suitable for parents and carers of children with additional needs as well as healthcare, social care or education professionals who support them.

Davina Richardson, RGN/RSCN BSc (Hons), Specialist Children's Nurse, Bladder & Bowel UK, Disabled Living Stand DL1



2pm - Autism; social communication and why early intervention is important

This seminar will focus on what is autism, national drivers – what is happening nationally to assist CYP with ASD, explanation, presentations of ASD, sensory modulation, early intervention.

The objectives of this seminar are:

- To present an overview on social communication disorder and autism
- To explore the current national and local drivers
- To understand the difficulty in diagnosing autism
- To explore sensory processing disorder and its impact (whistle stop tour!)
- To identify early intervention

Learning outcomes:

- To gain an awareness of autism and social communication difficulties
- Understand the need for a sensory approach
- Recognising the importance of early intervention especially in the foundational years

Alison Butterworth, APNP, RSCN/RGN, Advanced Paediatric Nurse Practitioner, Community Paediatric Service, Pennine Care Foundation Trust

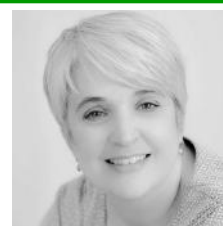


3pm - Evidence based approach to sleep issues

This seminar will look at the details of the latest research projects around ADHD and ASD, including the interventions and outcomes, that The Children's Sleep Charity have been involved in.

Claire and Carol have 19 years combined experience as trained Sleep Practitioners and have been working with the charity since its conception in 2012. They are both parents of young men with complex health needs and significant disabilities and were both once sleep deprived parents. They run the commissioned sleep services in Doncaster and Bassetlaw as well as delivering nationwide training with the team at the charity.

Claire Earley and Carol Batchelor, Sleep Practitioners, The Children's Sleep Charity Stand V14



For those attending seminars, Certificates of Attendance will be available to collect on the day to boost CPD portfolios.

Seminars sponsored by



A-Z Exhibitor List

AAT GB Ltd E1

Powered solutions to manage people up to 160kg with reduced mobility on stairways. Extensive range of continually adjustable adult and paediatric vacuum posture cushions. Including products to assist ataxia and related conditions. State of the art lifting chair for fallen persons. Bathing solutions. Sleep systems pressure relief/thermoreg.

Address: Community Enterprise Centre, Office 3, Well Street, Cefn Mawr, Wrexham, Clwyd, LL14 3YD
Tel: 01978 821 875 **Email:** sales@aatgb.com
Website: www.aatgb.com

Abacus Specialist Bathroom Solutions C3

Abacus are a leading supplier of specialist bathing solutions for specialist home adaptations, special education establishments and residential care homes. We will be demonstrating our popular 3-in-1 variable height Gemini 2000 platform bath at Kidz to Adultz North and giving children the chance to win their own cuddly Trevor the Turtle.

Address: 10 & 11 The Oaks, Clews Road, Redditch, Worcestershire, B98 7ST **Tel:** 01527 400 024
Email: andrew.williams@ghg-uk.com
Website: www.abacushealthcare.co.uk

Ability Needs Magazine D17

Visit our stand to collect your free copy of Ability Needs, Britain's essential journal on disability, with news from Britain's main disability groups and industry information on the top products available in the mobility and home care marketplace.

Address: 7 Montgomerie Terrace, Ayr, South Ayrshire, KA7 1JL **Tel:** 01292 287 574
Email: abilityneeds@btinternet.com
Website: www.abilityneeds.co.uk

Able Magazine Literature Area

Able Magazine is the UK's favourite disability lifestyle publication with 25 years experience writing about the things that matter to disabled people. Our positive, insightful, specialist editorial covers the entire disability spectrum: news, travel, leisure, research and the latest products as well as sports, activities and competitions.

Address: Primas Media, The Pentagon Centre, Washington St, Glasgow, Lanarkshire, G3 8AZ
Tel: 0141 285 4000 **Email:** enquiries@primasmedia.co.uk
Website: www.ablemagazine.co.uk

Activate For Kids Ltd B13

Manufacturer and supplier of manual and power wheelchairs for children.

Address: 10 Edison Road, Sailsbury, Wiltshire, SP2 7NU
Tel: 07974 807 233 **Email:** sales@activateforkids.com
Website: www.activateforkids.com

Activity Alliance V39

At Activity Alliance we work to make active lives possible with a vision that disabled people are active for life. Through our programmes, we offer training for schools, community groups, healthcare professionals and coaches to develop inclusive PE and introduce physical activity and sport to all. Come and speak to us to find out more.

Address: 3 Oakwood Drive, Loughborough, Leicestershire, LE11 3QF **Tel:** 01509 227 750
Email: programmes@activityalliance.org.uk
Website: www.activityalliance.org.uk

Affinity Design EU Ltd F8

Affinity Design Holidays provides a superb facility for disabled people to enjoy a holiday in a villa which is genuinely accessible! We have a track hoist, mobile hoist, pool hoist, hi-lo profiling beds and wetrooms! No more doubts about accessibility, anyone with high dependency needs can thoroughly enjoy our villa in Denia, Spain!

Address: Affinity Design Holidays, 20 Stenner Lane, Didsbury, Manchester, M20 2RQ **Tel:** 07770 877 229
Email: info@affinitydesign.eu
Website: www.affinitydesign.eu

All Terrain Wheelchairs Ltd B15

Distributors of a range of off road wheelchairs, including bespoke built, powered wheelchairs & manual beach wheelchairs. Offering the wheelchair user the opportunity to access places otherwise impossible with their standard wheelchair.

Address: Unit A5, Dawley Bank Workshops, Telford, Shropshire, TF4 2BA **Tel:** 01952 471 255
Email: info@allterrainwheelchairs.co.uk
Website: www.allterrainwheelchairs.co.uk

Allied Mobility CZ4 & CZ5

Allied Mobility is the leading wheelchair accessible vehicles specialist for the UK and Ireland. We supply a wide range of wheelchair accessible cars, MPVs and minibus conversions. As a Motability partner, we offer a unique selection of wheelchair cars to private individuals and families.

Address: 230 Balmore Road, Glasgow, Scotland, G22 6LJ
Tel: 0808 252 7863 **Email:** info@alliedmobility.com
Website: www.alliedmobility.com

Aquasure UK Ltd C26

Aquasure UK Ltd design and build bespoke aquatic therapy pools to suit individual needs and budgets.

Address: Unit 13, Portland Industrial Estate, Portland Street, Bury, Lancashire, BL9 6EY **Tel:** 0161 764 5530
Email: info@aquasureuk.com
Website: www.aquasureuk.com

Ardoo Portable Hoists B29

The Ardoo 140 Portable hoist is the lightest, most compact, folding portable disability hoist on the market. Its unique design makes it easy to erect or fold in seconds - no tools needed. Use it in the home, hotel, the car and is easily taken on day trips to family or friends. Optional footplate converts it to a portable Sit to Stand Aid.

Address: Unit 424, 109 Vernon House, Friar Lane, Nottingham, Nottinghamshire, NG1 6DQ
Tel: 0115 781 0676 **Email:** info@ardoohoists.com
Website: www.ardoohoists.com

Astor-Bannerman C4

With over 25 years' experience, Astor-Bannerman are experts in the design and manufacture of specialist bathing and care equipment. Innovation and understanding our customer needs have led to an exciting new range of products set for launch. Specialist bathing ...patient handling ... changing and showering ... beyond routine.

Address: Unit 11c-11f, Coln Park, Andoversford Industrial Estate, Andoversford, Cheltenham, Gloucestershire, GL54 4HJ **Tel:** 01242 822 949
Email: alice.morris@astorbannerman.co.uk
Website: www.astorbannerman.co.uk

Autisk V7

Autisk is a voluntary led support group offering support, social groups and workshops plus much more to families in and around the Stockport area who have children and young people with additional needs.

Address: Adswood Youth Centre, Neston Grove, Stockport, Cheshire, SK3 8PH **Tel:** 07981 114 222
Email: autisk17@gmail.com **Website:** www.autisk.co.uk

Baffin Technology Systems Limited B5

Baffin provides multifunctional standing frames featuring Second Spine Technology™. Our high quality, innovative and patented products cater to a wide range of conditions supporting rehabilitation and offering solutions for complex medical needs.

Address: The University of Northampton Innovation Centre, Green Street, Northampton, Northamptonshire, NN1 1SY **Tel:** 07496 665 772 **Email:** b.bosca@baffin.co.uk
Website: www.clean.baffin.co.uk

BaKare Beds Limited C19

Established in 1993, BaKare has gained a reputation that is both trusted and synonymous with quality. We have earned this reputation through collaborating with some of the leading names in Adult Hospices, Children's Hospices, Private Care Homes and Local Authorities including Occupational Therapists, Physiotherapists and individuals.

Address: Unit 1, Blue Water Estate, Bell Close, Plympton, Plymouth, Devon, PL7 4JH **Tel:** 01752 512 222
Email: dhambly@bakare.co.uk
Website: www.bakare.co.uk

Barnstondale Centre V8

Meadow Cabin at Barnstondale is the perfect place to stay for groups, schools & families; catered or self-catering. We offer excellent log cabins and adventure activities and have outstanding facilities for people with multiple disabilities, including hoists, sensory rooms and an adapted jeep to take wheelchairs into our wooded dale.

Address: Storeton Lane, Barnstondale, Wirral, Merseyside, CH61 1BX **Tel:** 0151 648 1412
Email: info@barnstondale.org
Website: www.meadowcabin.org

Beaumont College D7

Beaumont College offers person-centred day and residential programmes to young people aged between 18 and 25 with a broad range of physical and/or learning impairments. Our aim is to enable students to take responsibility for their lives in whichever form this takes and to realise their dreams in the safest way possible.

Address: Slyne Road, Lancaster, Lancashire, LA2 6AP
Tel: 01524 541 400
Email: hayley.campbell@beaumontcollege.ac.uk
Website: www.beaumontcollege.ac.uk

Bendrigg Trust V16

Situated in the Lake District, Bendrigg Trust provides life changing experiences for people with disabilities. We offer fully inclusive residential courses & day visits which include a variety of adventurous activities like canoeing, climbing & caving. We offer courses for groups, schools, children, families & adults with disabilities.

Address: Bendrigg Lodge, Kendal, Cumbria, LA8 0NR
Tel: 01539 723 766 **Email:** martha@bendrigg.org.uk
Website: www.bendrigg.org.uk

Bennett Workplace Solutions - Vela A4

Bennett Workplace Solutions are the recommended supplier of 'Vela' Chairs within the Midlands and North of England. Our highly trained specialist assessors conduct assessments for both Children and Adults. VELA chairs are designed to encourage Independence & Mobility and will grow with the child.

Address: Viking Street, Bolton, Greater Manchester, BL3 2RR **Tel:** 07733 886 562

Email: matt.teed@bennett-workplace.co.uk
Website: www.bennett-workplace.co.uk

Bespoke Mobility UK Ltd D32

Based in Blackburn, Lancashire and covering the whole of the UK with our network team of experienced engineers and product specialists. We offer a wide range of main line and Bespoke equipment. To fit your needs we offer a fully equipped assessment vehicle offering two fitted clamp down units for wheelchair DRIVE from units.

Address: Unit 6 Guide Business Centre, School Lane, Blackburn, Lancashire, BB1 2QH **Tel:** 07584 484 286
Email: dheadford21@hotmail.co.uk
Website: www.bespokemobilityuk.co.uk

Bladder and Bowel UK DL1

BBUK is the only national helpline service providing support for children and adults with bladder and bowel problems, their carers and the professionals who support them. Our team provides clinical and product advice, signposting to additional support services, consultancy and much more. Free resources are available on our website.

Address: Burrows House, 10 Priestley Road, Wardley Industrial Estate, Worsley, Greater Manchester, M28 2LY
Tel: 0161 607 8219 **Email:** bbuk@disabledliving.co.uk
Website: www.bbuk.org.uk

Brainwave V9

Brainwave is a charity that helps children with disabilities & additional needs achieve greater independence by providing a range of therapies. The children we work with have a range of conditions including autism, cerebral palsy and genetic disorders such as Down's syndrome.

Address: Marsh Lane, Huntworth Gate, Bridgwater, Somerset, TA6 6LQ **Tel:** 01704 572 775
Email: sallypreston@brainwave.org.uk
Website: www.brainwave.org.uk

Brig Ayd Controls Ltd CZ10

Brig-Ayd controls Ltd is a family run business that has been designing, manufacturing and fitting adaptations for vehicles for the disabled since 1975. We have helped thousands of disabled drivers to be independent by using hand controls, left foot accelerators and hoists.

Address: 56A Bridge Road East, Welwyn Garden City, Hertfordshire, AL7 1BS **Tel:** 01707 322 322
Email: denise@brig-aydcontrols.co.uk
Website: www.brig-aydcontrols.co.uk

British Wheelchair Basketball V29

British Wheelchair Basketball (formerly the Great Britain Wheelchair Basketball Association) is the governing body for wheelchair basketball in the United Kingdom. There are currently 17,000 people playing the sport in the UK, 200+ teams, and a potential participation growth of up to 70,000.

Address: SportPark, 3 Oakwood Drive, Loughborough, Leicestershire, LE11 3QF **Tel:** 01509 279 900
Email: membership@britishwheelchairbasketball.co.uk
Website: www.britishwheelchairbasketball.co.uk

Floorplan &

- Rompa Ltd
- Lake District Calvert Trust
- Trustford
- Bennett Workplace Solutions - Vela
- Medimotion Limited
- Consolor Ltd
- SEN Magazine Ltd
- Clear Law
- Ontex Healthcare
- Seenin Ltd
- Delichon Limited
- CL Medilaw
- Leckey
- Pressalit
- Cleen by HSG
- SpecialKids.Company
- BundleBean
- Equip To Move Ltd - Memo Shoes
- Etac R82
- Grainge Villa Florida
- Integrex Limited
- Home From Home Care
- Baffin Technology Systems Limited
- Motability
- Theraposture Ltd
- Hugh Jones Solicitors
- Irwin Mitchell Solicitors LLP
- Activate For Kids Ltd
- Mobility For You Ltd
- All Terrain Wheelchairs Ltd
- Otto Bock Healthcare PLC
- Techcess Communications
- Newlifeable
- Fieldfisher
- Remotion Ltd
- Smirthwaite Ltd
- Scan Mobility Limited
- Quantum Rehab working with RKS Occupational Therapy Services
- Murrays Medical Equipment
- Estate Planning Solutions
- Foicare Limited
- Neater Solutions Ltd
- Independence Mobility Ltd
- Creative Care Ltd
- Ardoo Portable Hoists
- HKD Solutions Ltd
- Jobskin Ltd
- Jiraffe
- Newlife Charity for Disabled Children**
- Abacus Specialist Bathroom Solutions
- Astor-Bannerman
- Da Vinci Mobility
- DeNovo Healthcare Ltd
- Kinderkey Healthcare Ltd
- Moorings Mediquip UK Ltd
- Carebase
- Safespaces
- Kingkraft
- Schuchmann LLP
- JCM Seating Part of Sunrise Medical Ltd
- Specialised Orthotic Services
- Freeths LLP
- Closomat Ltd
- BaKare Beds Limited
- Everyone Can
- Theraplay Ltd
- RMS Ltd
- Explore Your Senses
- Aquasure UK Ltd
- MERU
- Queen Elizabeth Foundation Accessible Aviation
- Daily Care Ltd
- Lifeways Community Care Ltd
- McElmeel Mobility Services Limited
- TBC Conversions Ltd
- Allied Mobility
- Lewis Reed
- Brig Ayd Controls Ltd
- Medpage Limited T/A Easylink UK
- Kozyfozy Solutions
- More Rehab Ltd

- A1
- A2
- A3
- A4
- A5
- A6
- A8
- A9
- A10
- A11
- A12
- A13
- A17
- A19
- A23
- A24
- A26
- A27
- B1 & B8
- B2
- B3
- B4
- B5
- B9
- B10
- B11
- B12
- B13
- B14
- B15
- B16
- B17
- B17a
- B18
- B18a
- B19
- B20
- B22
- B23
- B24
- B24a
- B25
- B26
- B27
- B29
- B31
- B31a
- C1
- C2
- C3
- C4
- C5
- C7
- C8
- C9
- C10
- C11
- C12
- C13a
- C14
- C16
- C17
- C18
- C19
- C20
- C22
- C23
- C25
- C26
- C27
- C27a
- C28
- C30
- CZ1, CZ2 & CZ8
- CZ3 & CZ6
- CZ4 & CZ5
- CZ7
- CZ10
- D1
- D3
- D5



Exhibitor List

ENTRANCE



PLAN KEY:



Changing Room



First Aid



Accessible Toilet



Toilets



Catering



Car Display



Mobiloo



**Disabled Living
(Organiser - Kidz to
Adultz Events)**



Funders

- Beaumont College D7
- PosAbility Magazine D9
- The OT Magazine D9
- RGK Wheelchairs D12
- Price Slater Gawne D13
- FBC Manby Bowdler LLP D15
- R Healthcare D16
- Ability Needs Magazine D17
- EasyRise Limited D18
- Slater and Gordon Lawyers D19
- Loopwheels D20
- Mountain Trike D22
- Osprey Healthcare D23
- Smile Smart Technology Limited D26
- Bespoke Mobility UK Ltd D32
- Disabled Living (Organisers of Kidz to Adultz Events) DL1



- Redbank House (Disabled Living) DL1
- Bladder and Bowel UK DL1
- Equipz & Training @ Disabled Living (Organisers of the Kidz to Adultz Exhibitions) DL1
- AAT GB Ltd E1
- Coleg Elidyr E3
- Lazarehab Ltd E4
- Chunc Limited E5
- Manchester Airport E6
- easyTravelseat (powered by able move) E7a
- Symmetrikit Postural Care F1
- DWP F4
- Bromleys Solicitors LLP F5
- Clinimed Ltd F6
- Centrobed F7
- Affinity Design EU Ltd F8
- Experience Community CIC F10
- The Joshua Wilson Brain Tumour Charity F12



- SpokeGuards F15
- Chaneco Ltd F18
- Pods Play F19
- Disabled Motoring UK F25
- Driving Mobility F27
- Remap Innovation Hub
- Able Magazine Literature Area
- Enable Magazine Literature Area
- Variety, the Children's Charity V1
- Fashion & Textile Children's Trust V2
- Family Fund V3
- The Sequal Trust V4
- Queen Alexandra College (QAC) V5
- Together for Short Lives V6
- Autisk V7
- Barnstondale Centre V8
- Brainwave V9
- David Lewis V10
- Communication Specialist College - Doncaster V11
- Ruskin Mill Trust V12
- Treloar School and College V13
- The Children's Sleep Charity V14
- Phab V15
- Bendrigg Trust V16
- LUSU Sports Ltd V17
- Seashell Trust V18
- The Movement Centre V19
- SWAN UK (Genetic Alliance UK) V20
- Calvert Kielder V21
- Peeps V22
- National Star College V24
- Shine V25
- Sense Specialist Services for Children and Young People V26
- Designability V27
- British Wheelchair Basketball V29
- Stockport Foster Carers Association V30
- The Makaton Charity V31
- The Partially Sighted Society V32
- Oakwood Academy V33
- Cycling Projects - Wheels for All V34
- Calibre Audio Library V35
- DD Payroll Services V36
- Cerebral Palsy Sport V37
- WheelPower V38
- Activity Alliance V39



Bromleys Solicitors LLP F5

Bromleys is an award-winning law firm with a nationally recognised Court of Protection department. Our highly-experienced team are committed to providing an exceptional service and are well-equipped to advise on all aspects of Court of Protection relating to property and affairs including management through a dedicated Trust Corporation.

Address: 50 Wellington Road, Ashton-under-Lyne, Lancashire, OL6 6XL **Tel:** 0161 330 6821
Email: bromleys@bromleys.co.uk
Website: www.bromleys.co.uk

BundleBean A26

A range of ingenious all weather wheelchair footmuffs/covers for adults and kids, incorporating the new range of lightweight covers and wheelchair organiser bags. In bright, cheerful patterns (as well as classic plain black), easy to fit and super practical - these covers are well loved by everyone who owns one!

Address: The Butts, Manningford Abbots, Pewsey, Wiltshire, SN9 6HZ **Tel:** 020 3795 7225
Email: emily@bundlebean.com
Website: www.bundlebean.com

Calibre Audio Library V35

Calibre Audio Library brings the pleasure of reading to people with sight problems, dyslexia or disabilities that prevent them from reading print, through a free nationwide postal and internet service of audiobooks. We offer a choice of 11,000 titles, fiction and non-fiction, recorded unabridged by professional actors and broadcasters.

Address: New Road, Aylesbury, Buckinghamshire, HP22 5XQ **Tel:** 01296 432 339
Email: enquiries@calibre.org.uk
Website: www.calibre.org.uk

Calvert Kielder V21

Calvert Kielder is respected globally as a leading provider of outdoor experiences for disabled people. We love giving disabled people along with their family, friends and carers time-out and the opportunity to access a range of inspiring and increasingly challenging experiences and activities.

Address: Kielder Water & Forest Park, Hexham, Northumberland, NE48 1BS **Tel:** 01434 250 232
Email: enquiries@calvert-kielder.com
Website: www.calvert-trust.org.uk/kielder

Carebase C10

Carebase provide a range of products for young individuals and carers. This includes specialist beds, cots and solutions to create safer environments. We have the capacity to create bespoke products with our own in-house manufacturing and long term relationships with high quality suppliers. We offer FREE no obligation assessments.

Address: Unit 6-7, Moxon Court, Northallerton Business Park, Thurston Road, Northallerton, North Yorkshire, DL6 2NG **Tel:** 01609 785 360
Email: leanne@carebase.net **Website:** www.carebase.net

Centrobed F7

Centrobed is the UK's leading manufacturer of bespoke, specialist beds & cots. From Bariatric to Paediatric we have a unique range of beds/equipment to suit all.

Address: Anglo House, Wotton Road, Kingsnorth Industrial Estate, Ashford, Kent, TN23 6LN
Tel: 01233 635 353 **Email:** lisa@centrobed.com
Website: www.centrobed.com

Cerebral Palsy Sport V37

Cerebral Palsy Sport is the country's leading national disability sports charity supporting people with cerebral palsy to reach their sporting potential and putting people with cerebral palsy and their families at the heart of everything we do.

Address: Unit 5 Heathcoat Building, Nottingham Science Park, University Boulevard, Nottingham, Nottinghamshire, NG7 2QJ **Tel:** 01159 257 027
Email: sandydrummond@cpsport.org
Website: www.cpsport.org

Chaneco Ltd F18

Chaneco are one of the largest independent suppliers of Orthopaedic footwear in the UK. Our new Smart Steps range of Paediatric Footwear and foot orthotics are manufactured in our Northampton factory, and are available as stock, modular and bespoke, in a wide range of styles, sizes, fittings and colours, including our new glitter leather!

Address: 4 Kilvey Road, Brackmills, Northampton, Northamptonshire, NN4 7BQ **Tel:** 01604 709 999
Email: kathy@chaneco.co.uk
Website: www.chaneco.co.uk

Chunc Limited E5

Chunc Limited is a family owned business, specialising in the manufacturing of paediatric wheelchairs both indoor and outdoor to the NHS and private clients. For more information please visit our stand.

Address: Unit 416, Tarsmill Court, Rotherwas Industrial Estate, Hereford, Herefordshire, HR2 6JZ
Tel: 01432 377 512 **Email:** nina@chunc.co.uk
Website: www.chunc.com

CL Medilaw A13

CL Medilaw are specialist medical negligence and serious injury solicitors who work with our clients to get the support, answers and compensation they deserve. Joining us on our stand is Rainbow House, a charity dedicated to helping people with disabilities achieve a higher level of independence, whilst also supporting their families.

Address: Midland House, West Way, Botley, Oxford, Oxfordshire, OX2 0PH **Tel:** 0345 2410 154
Email: braininjury@clmedilaw.co.uk
Website: www.clmedilaw.co.uk

Clear Law A9

Clear Law specialise in providing expert advice in serious injury and medical negligence cases. We take care of every aspect of medical negligence or serious injury claims on our clients behalf, and will happily visit clients in any part of the country at their home address. We run cases on a no win no fee agreement!

Address: Units 115-119 Timber Wharf, 42-50 Worsley Street, Manchester, M14 4LD **Tel:** 01618 732 740
Email: melissa.s@clearlawonline.co.uk
Website: www.clearlawonline.co.uk

Cleen by HSG A24

The free Cleen App allows the public to find and review any washroom. Users can give praise, highlighting cleanliness, facilities and overall experience or raise issues such as faulty equipment or no soap or bad smells. Cleen then works with venues to alert them in real-time, linking with service providers to rectify issues quickly!

Address: Unit 4, Victoria Way, Pride Park, Derby, DE24 8AN **Tel:** 07710 141 753
Email: sonia.harvey@hsguk.com
Website: www.cleen.world

Clinimed Ltd F6

CliniMed markets and distributes innovative medical products for Stoma Care, Urology & Continence and Wound Care and also offers a confidential and free home delivery service via SecuriCare/Pharmacare, our sister company. Our Vision: Exceeding expectations, delivering better healthcare for our patients.

Address: Cavell House, Knaves Beech Way, Loudwater, High Wycombe, Buckinghamshire, HP10 9QY

Tel: 07970 090250 **Email:** karen.park@clinimed.co.uk

Website: www.clinimed.co.uk

Closomat Ltd C18

Closomat is the UK's leader in the provision of helpful toileting solutions at home and away. The full range of wash & dry toilets are complimented by a range of additional assistive devices, all aimed at optimising a person's independence and hygiene in intimate care.

Address: Building 1, Brooklands Place, Sale, Cheshire, M33 3SD **Tel:** 01619 691 199

Email: robin.tuffley@clos-o-mat.com

Website: www.clos-o-mat.com

Coleg Elidyr E3

The only college in Wales to be accredited by the National Autistic Society and judged as 'Excellent' by Estyn, the Education and Training Inspectorate for Wales. Coleg Elidyr provides young adults with moderate to severe learning difficulties and disabilities with the opportunity to build skills for work and life.

Address: Rhandirmwyn, Llandovery, Carmarthenshire, SA20 0NL **Tel:** 01550 760 440

Email: jeremymoore@colegelidyr.ac.uk

Website: www.colegelidyr.ac.uk

Communication Specialist College - Doncaster V11

We offer individualised day and residential programmes of study for those with communication difficulties including Hearing Impairments, ASC & Learning Difficulties. Vocational subjects are taught in real work environments and students develop social and independence skills in college and the community, in a highly supportive environment.

Address: Doncaster Deaf Trust, Leger Way, Doncaster, South Yorkshire, DN2 6AY **Tel:** 01302 386 700

Email: sharon.rhodes@cscd.ac.uk

Website: www.cscdoncaster.co.uk

Consolor Ltd A6

Consolor Ltd is a UK leading assessor, manufacturer & provider of complex postural solutions to both NHS/Private end users. Our products are designed to work in all environments, including outdoor mobility, indoor relaxing, hygiene & education. Our clinicians provide a thorough assessment ensuring the optimum outcome is delivered.

Address: Calmore Industrial Park, Nutsey Lane, Totton, Southampton, Hampshire, SO40 3XJ **Tel:** 01202 827 650

Email: simon@consolor.co.uk

Website: www.consolor.co.uk

Creative Care Ltd B27

Tough safe beds, safe environments, Hi-Lo beds, profiling beds and travel beds all custom made to suit the requirements of children and adults with complex needs. Technical beds with a unique none medical look.

Address: Sandholme Sawmill, Key Sike Lane, Todmorden, Lancs, OL14 5RF **Tel:** 07585 667 248

Email: sales@creativecareltd.co.uk

Website: www.creativecareltd.co.uk

Cycling Projects - Wheels for All V34

Cycling Projects promotes and delivers the Wheels for All network offering a broad range of inclusive cycling settings across the country. At every Wheels for All centre there is a broad range of cycles available under the support and guidance of Cycling Projects staff and volunteers. Come along and find out more inclusive cycling.

Address: Cycling Projects, 11/ 13 Wilson Patten Street, Warrington, Cheshire, WA1 1PG **Tel:** 01925 234 213

Email: ian.tierney@cycling.org.uk

Website: www.cycling.org.uk

Da Vinci Mobility C5

Leading manufacturer of bespoke lightweight manual wheelchairs, electric hand cycles, hand cycles, supplier of electric wheels, wheelchairs and spare parts. We are also motability accredited installers for vehicle adaptations.

Address: Unit 6, Carraway Road, Gilmoss Industrial Estate, Liverpool, Merseyside, L11 0EE

Tel: 0151 548 1999 **Email:** tony@davincimobility.co.uk

Website: www.davincimobility.com

Daily Care Ltd C28

Daily Care specialises in designing toileting, bathing and showering equipment from paediatric to adults. Making standard and bespoke equipment tailored to the users needs. Combi Unit Toileting Bathing & Showering Chair, Bathing Cradles, Tilt in Space Chairs, Changing / Shower Tables, Nimo Paediatric Bathing /Toileting/Showering Chair.

Address: Unit 4 Farfield, Main Road, Wykeham, Scarborough, North Yorkshire, YO13 9QB

Tel: 07887 846 953 **Email:** info@dailycare.co.uk

Website: www.dailycare.co.uk

David Lewis V10

David Lewis day and residential School and College offer a holistic learning environment and "Waking Day Curriculum" with access to on-campus therapists and medical specialists for young people aged 14-25 with a wide range of complex needs. Including moderate to profound learning disabilities and neurological conditions.

Address: Mill Lane, Warford, Cheshire, SK9 7UD

Tel: 01565 640 000 **Email:** angie.fisher@davidlewis.org.uk

Website: www.davidlewis.org.uk

DD Payroll Services V36

A dynamic payroll and managed account service devoted to making life easier for employers across the UK. We specialise in assisting disabled people employing personal support and as part of a disability charity understand the needs of our clients more than any other UK payroll provider.

Address: 20 Royal Scot Road, Derby, DE24 8AJ

Tel: 07814 199 595

Email: natasha.barnes@ddpayroll.co.uk

Website: www.ddpayroll.co.uk

Delichon Limited A12

Our great range of outdoor mobility and seating products are for children and adults. So whether you are interested in a Foam-Karve seat to improve your comfort and posture, a Delta all-terrain buggy to get out into the countryside or a Hippocampe Beach Wheelchair for trips to the seaside, we are here to help.

Address: 1 The Clayfields, Sandleheath Industrial Estate, Old Brickyard Road, Fordingbridge, Hampshire, SP6 1PA

Tel: 01725 519 405 **Email:** info@delichon.co.uk

Website: www.delichon.uk

DeNovo Healthcare Ltd C7

DeNovo Healthcare has a brand new collection of Adult's Footwear, fashionable & comfortable with the possibility of being fully bespoke just like their Children's Footwear Collection! We are a dynamic & progressive company focused on providing innovative products & services from around the world to the UK healthcare market & public.

Address: Unit 6a Cheddar Business Park, Wedmore Road, Cheddar, Somerset, BS27 3EB

Tel: 01934 808 416

Email: dlourenco@denovohealthcare.com

Website: www.denovohealthcare.com

Designability V27

Wizzybug is the fun and innovative powered wheelchair for children aged 14 months to 5 years. The charity Designability runs a loan scheme which provides Wizzybugs FREE of charge to children who can benefit. Come and visit our stand and try one out! Visit our website for more information.

Address: Department D1, Wolfson Centre, Royal United Hospital, Bath, BA1 3NG **Tel:** 01225 824 103

Email: lesleye@designability.org.uk

Website: www.designability.org.uk

Disabled Living (Organisers of Kidz to Adultz Events) DL1

We can help with impartial information and advice on equipment, products (assistive technology) and services for disabled adults, children, older people and the professionals who support them. We can also help with information on any aspect of the event.

Address: Burrows House, 10 Priestley Road, Wardley Industrial Estate, Worsley, Greater Manchester, M28 2LY

Tel: 0161 607 8200 **Email:** info@disabledliving.co.uk

Website: www.disabledliving.co.uk

Disabled Motoring UK F25

Disabled Motoring UK represents the interests of motorists with disabilities. It is an independent membership charity.

Address: Disabled Motoring UK, National Office, Ashwellthorpe Hall Drive, Ashwellthorpe, Norfolk, NR16 1EX **Tel:** 01508 489 449

Email: graham@disabledmotoring.org

Website: www.disabledmotoring.org

Driving Mobility F27

Driving Mobility is a nationwide network of independent organisations. All of our centres offer professional, high quality information, advice and assessments to people who need to gain or retain independence through mobility.

Address: 2, Princes Street, Truro, Cornwall, TR1 2ES

Tel: 0800 559 3636 **Email:** info@drivingmobility.org.uk

Website: www.drivingmobility.org.uk

DWP F4

Meet representatives from DWP to hear about the role and support that is available from our Disability Employment Advisers. Learn more about Universal Credit Full Service & other welfare support services. Gain an awareness of the work being undertaken with employers who are supporting DWP's Disability Confident & See Potential programmes.

Address: JobcentrePlus, 1009 Oldham Road, Newton Heath, Greater Manchester, M40 2EP

Tel: 0161 254 8069 **Email:** christine.hulse@dwp.gov.uk

Website: www.gov.uk

EasyRise Limited D18

Introducing the Genie V2 standing wheelchair by EasyRise. Providing independence and comfort through standing, the Genie V2 can revolutionise your day to day life and wellbeing. Each Genie is produced bespoke to your individual requirements, made to measure with a wide range of posture supports, comfort aids, and optional accessories.

Address: Oakland House, Hortonwood 35, Telford, Shropshire, TF1 7FR **Tel:** 01952 610 300

Email: info@easyrise.co.uk

Website: www.geniestandingwheelchairs.co.uk

easyTravelseat (powered by able move) E7a

Award winning easyTravelseat, endorsed by easyJet Founder Sir Stelios Haji-Ioannou. Provides in-situ transfer seats for people needing physical transfers on/off aircrafts. The difference, you own it and will remain in it from home to hotel. We put your safety, dignity and comfort first - come see us for a demo.

Address: The Barn, 117 London road, Warmley, Bristol, BS30 5NA **Tel:** 07854 702 275

Email: charlottefindlay@easytravelseat.com

Website: www.easytravelseat.com

Enable Magazine Literature Area

Enable is the UK's leading disability and lifestyle magazine, filled with an eclectic mix of features that matter to our readers. Each bi-monthly issue, includes articles focused on employment, education, to leisure activities, holidays, sport, a selection of big-name interviews and competitions. Pick up your free copy at the event!

Address: 198 Bath Street, Glasgow, Lanarkshire, G2 4HG

Tel: 0844 249 9007 **Email:** denise@dcpublishing.co.uk

Website: www.enablemagazine.co.uk

Equip To Move Ltd - Memo Shoes A27

Memo Orthopaedic shoes, boots, sandals and orthotic inserts. From first walkers to adult sizes. Beautiful designs and colours for boys and girls. We also supply lumbar cushions, walking aids, hand, arm and leg splints. We offer anti-snoring pillows and pillows for posture issues. Sensory balls, hand therapy items. Ladies bunion products.

Address: 1 Moat Farm Close, Greenfield, Bedfordshire, MK45 5DP **Tel:** 07905 539 212

Email: enquiries@equiptomove.co.uk

Website: www.equiptomove.co.uk

Equipz & Training @ Disabled Living (Organisers of the Kidz to Adultz Exhibitions) DL1

Equipz - providing impartial equipment and service advice to disabled children and adults, their families, friends and health care professionals. Training - training current and relevant courses, Moving and Handling, Train the Trainers & Updates, In the Dock (recording and documentation), Trusted Assessor & Refresher.

Address: Burrows House, 10 Priestley Road, Wardley Industrial Estate, Worsley, Manchester, M28 2LY **Telephone:** 0161 607 8200

Email: training@disabledliving.co.uk

Website: www.disabledliving.co.uk

Estate Planning Solutions B24

To give guidance to parents and carers of vulnerable beneficiaries to help them to plan ahead in protecting those beneficiaries against the problems that may arise if they accumulate or inherit. We advise upon the use of vulnerable beneficiary discretionary Trusts, Lasting Powers of Attorney, Deputyships, and Wills.

Address: Southgate Centre Two, 321 Wilmslow Road, Heald Green, Cheshire, SK8 3PW

Tel: 01625 540 033 **Email:** sheila.nolan@estplan.co.uk

Website: www.estplan.co.uk

Etac R82 B1 & B8

Etac R82 offers innovative product solutions to enhance independence and mobility for people of all ages through its brands: R82, Etac, Molift, Immedia, Convaid and Star Cushion. Paediatric solutions include: R82 seating, standing, walking, toileting, bathing and transport, Convaid specialist buggies and Molift hoists and slings.

Address: Unit D4A, Coombswood Business Park East, Coombswood Way, Halesowen, West Midlands, B62 8BH

Tel: 0121 561 2222 **Email:** uk.enquiries@r82.com

Website: www.r82.co.uk

Everyone Can C20

At Everyone Can we use the power of technology to help disabled people speak, control their environment, gain independence and have fun! We have a number of free services at our Technology & Gaming Centre in Sale, South Manchester. We carry out assessments, assistive technology workshops and accessible gaming sessions.

Address: Floor 1, 25 School Road, Sale, Trafford, M33 7XX **Tel:** 0808 800 0009

Email: contact@everyonecan.org.uk

Website: www.everyonecan.org.uk

Experience Community CIC F10

Experience Community is a not-for-profit organisation that helps disabled people access the great outdoors using Mountain Trikes and adapted bikes to provide inclusive activities for all the family. We also sell the equipment we use and all profits are reinvested back into our organisation to support the work we do.

Address: The Civic Basement, New Street, Slaithwaite, Huddersfield, West Yorkshire, HD7 5AB

Tel: 07958 591 841

Email: info@experiencecommunity.co.uk

Website: www.experiencecommunity.co.uk

Explore Your Senses C25

Come and visit our stand of innovative sensory resources. We are a family run company that supply toys to inspire and engage children and adults with special needs. Our stand consists of exciting products that light-up, help calm and relax, fidgets to distract fiddly fingers, purpose designed Kits and more.

Address: Titus House, 29 Saltaire Road, Shipley, West Yorkshire, BD18 3HH **Tel:** 01535 662 812

Email: samantha.thomas@exploreoursenses.co.uk

Website: www.exploreoursenses.co.uk

Family Fund V3

We provide grants to families who are raising a disabled or seriously ill child aged 17 or under. Our grants bring practical and essential help to a family such as washing machines, clothing, bedding, sensory toys and much needed family breaks.

Address: 4 Alpha Court, Monks Cross Drive, York, North Yorkshire, YO32 9WN **Tel:** 01904 550 055

Email: info@familyfund.org.uk

Website: www.familyfund.org.uk

Fashion & Textile Children's Trust V2

The Fashion & Textile Children's Trust is a trade charity which provides grants to the children of UK fashion and textile employees. Grants fund essential items to support the health and wellbeing of all children in the family (aged 0 -18 years). Funded items include mobility equipment, sensory toys, therapy, essential clothing and more.

Address: Victoria Charity Centre, 11 Belgrave Road, London, SW1V 1RB **Tel:** 03001 239 002

Email: grants@ftct.org.uk **Website:** www.ftct.org.uk

FBC Manby Bowdler LLP D15

FBC Manby Bowdler LLP understands the challenges and emotions you could be faced with when tackling a personal legal issue. Our trusted legal advisors will work in partnership with you to guide you through every stage of the legal process achieving the best possible outcome for you and your family.

Address: 6 - 10 George Street, Snow Hill, Wolverhampton, West Midlands, WV2 4DN **Tel:** 01902 393 460

Email: n.heera@fbcmb.co.uk **Website:** www.fbcmb.co.uk

Fieldfisher B18

At Fieldfisher we cater for clients with complex high-value personal injury and medical negligence claims. We understand the devastating effects that accidents and diseases can have on you and your family and are here to help ensure that you don't have to worry about the legal or financial implications of your situation.

Address: Riverbank House, 2 Swan Lane, London, EC4R 3TT **Tel:** 0800 358 3848

Email: personalinjury@fieldfisher.com

Website: www.fieldfisher.com/personalinjury

Foicare Limited B24a

FOICARE Wheelchairs, our folding electric wheelchairs are the strongest and lightest on the market, manufactured with advanced high technology and beautiful design, aeronautical frame and a driving range of 15 miles to 30 miles. We are part of Nanjing Foinoe Medical Equipment.

Address: 2 Pineridge Close, Wirral, Merseyside, CH62 2EE **Tel:** 07990 274 843

Email: miriam.foicare@gmail.com

Website: www.foicare.com

Freeths LLP C17

Freeths is a national law firm with a strong presence across the Midlands, Thames Valley and South East regions. Our team of caring and experienced Brain Injury lawyers will provide you with all the support and assistance you need with your claim whether it's for a negligence or deputyship matter.

Address: Cumberland Court, 80 Mount Street, Nottingham, Nottinghamshire, NG1 6HH **Tel:** 01158 599 600

Email: postmaster@freeths.co.uk

Website: www.freeths.co.uk

Grainge Villa Florida B2

Grainge Villa Florida are two luxury villas located in The Manor at Westhaven, Davenport, Florida near to Disney World. Both villas have 6 bedrooms and are fully accessible and have an electric pool hoist, single electric profiling bed, electric portable hoist, tilt and space shower commode chair amongst other equipment.

Address: Kenmuir, Sunningdale Road, Wallasey, Merseyside, CH45 0LU **Tel:** 07966 014 954

Email: graingevillaflorida@gmail.com

Website: www.graingevillaflorida.com

HKD Solutions Ltd B31

The UrZone safety bed is a low sensory safe space for sleeping or chilling out for both children and adults. It's incredibly strong and durable for daily use but fits into a suitcase for travel / respite / hospital use. Can be washed and tumble-dried. Custom-designed to suit specific needs. Full funding assistance provided.

Address: Unit 3, Elm Court, Cavalry Park, Peebles, Peeblesshire, EH45 9BU **Tel:** 0131 450 7124

Email: info@hkdsolutions.com

Website: www.hkdsolutions.com/urzone.asp

Home From Home Care B4

Created by parents to make the difference; Home From Home Care provides specialist residential care to adults (18+) with learning disabilities and complex needs, including autism, epilepsy, complex health needs, sensory needs, mobility needs & PMLD and associated mental health needs.

Address: PO Box 4412, Wells, Somerset, BA5 9AH

Tel: 0800 587 0372

Email: getintouch@homefromhomecare.com

Website: www.homefromhomecare.com

Hugh Jones Solicitors B11

Hugh Jones Solicitors is the largest firm of independent Court of Protection solicitors in the country. We support vulnerable people, particularly those with a mental incapacity, their families and their advisers.

Address: 2 The Malthouse, Deva City Office Park, Trinity Way, Manchester, M3 7BD **Tel:** 0161 817 3680

Email: info@hughjonessolicitors.co.uk

Website: www.hughjonessolicitors.co.uk

Independence Mobility Ltd B26

Independence Mobility is a specialist provider of mobility equipment and healthcare products for adults and children in the UK. We offer a complete range of high quality mobility products from leading UK manufacturers.

Address: Independence House, No 6, Buslingthorpe Green, Meanwood, Leeds, West Yorkshire, LS7 2HG **Tel:** 0113 262 8000

Email: enquiries@independencemobility.co.uk

Website: www.independencemobility.co.uk

Integrex Limited B3

Integrex is at the forefront of special needs technology design and provision in the UK. Interactive Floor Systems, Immersive Rooms and Interactive Screens all designed for the Special Needs Sector, to stimulate children's responses, cognitive understanding and recognition abilities.

Address: Portwood Industrial Estate, Church Gresley, Swadlincote, Derbyshire, DE11 9PT **Tel:** 01283 551 551

Email: elh@integrex.co.uk **Website:** www.integrex.co.uk

Irwin Mitchell Solicitors LLP B12

Irwin Mitchell Solicitors are one of the UK's most respected and successful law firms. With nationally recognised experts in personal injury, medical negligence, Court of Protection and Public Law & Human Rights, we support our clients and their families to help get them the best possible medical care and rehabilitation.

Address: 1 St Peter's Square, Manchester, Greater Manchester, M2 3AF **Tel:** 0161 838 3054

Email: lynne.carrick-leary@irwinmitchell.com

Website: www.irwinmitchell.com

JCM Seating Part of Sunrise Medical Ltd C14

JCM are experts in paediatric specialist, supportive seating and are at the forefront of innovative design solutions with the first ever truly dynamic seating system. Our objective is to provide children's postural seating systems which enhance the daily lives of individuals with varying degrees of disability.

Address: Reception, Thorns Road, Brierley Hill, West Midlands, DY5 2LD **Tel:** 01384 421 528

Email: joanna.sefton@sunmed.co.uk

Website: www.sunrisemedical.co.uk/seating/jcm

Jiraffe C1

Jiraffe specialises in providing postural care equipment and support for everybody, whether they're at home, school, rest or play! The Jiraffe range covers all aspects of everyday life from seating to mobility and sleeping, to therapy and bathroom equipment - aimed at enabling people to experience a wider range of activities in comfort.

Address: Wardsend Road, Sheffield, South Yorkshire, S6 1RQ **Tel:** 0114 285 3376 **Email:** hello@jiraffe.org.uk

Website: www.jiraffe.org.uk

Jobskin Ltd B31a

Jobskin Ltd - a company that has built its reputation by producing outstanding quality medical products for over 40 years. Jobskin® Sensory Dynamic Orthosis (SDO®) MTM garments are designed & produced to the finest detail to provide dynamic compression to increase sensory and proprioceptive feedback and provide musculoskeletal support.

Address: Unit 13a, Harrington Mill, Leopold Street, Long Eaton, Nottingham, NG10 4QG **Tel:** 0115 973 4300

Email: orders@jobskin.co.uk **Website:** www.jobskin.co.uk

Kinderkey Healthcare Ltd C8

We will be displaying our Kinderkey Cosysafe Cot which is probably one of the most versatile and cost effective cots on the market along with the new Bearhugzzz height adjustable model.

Address: Unit 1 Cilmedw Way, Llangollen, Denbighshire, LL20 8AG **Tel:** 01978 820 714

Email: contact@kinderkey.co.uk

Website: www.kinderkey.co.uk

Kingkraft C12

Kingkraft Ltd is a leading manufacturer, supplier, installer of bathing, changing & moving and handling products for all. We design and install complete bathrooms and sensory rooms. We offer free demonstrations and free survey and advice service. Please give us a call or visit our website for more information.

Address: 26D Orgreave Crescent, Dore House Ind Estate, Sheffield, South Yorkshire, S13 9NQ **Tel:** 01142 690 697

Email: info@kingkraft.co.uk **Website:** www.kingkraft.co.uk

Kozyfozy Solutions D3

A new business that provides cosy bags for wheelchair/pushchair users. We are a small business that caters for children to early teens to keep you warm and secure while riding your wheels. For the future we are looking to supply adults as well as young children.

Address: 40 Woodclose Avenue, Coventry, West Midlands, CV6 1HB **Tel:** 07971 175 401

Email: the4khans@mail.com

Website: www.kozyfozy.co.uk

Lake District Calvert Trust A2

The Lake District Calvert Trust is a fully accessible residential outdoor activity centre based on the scenic shores of Bassenthwaite Lake. We encourage people with disabilities, physical and learning, to achieve their potential through the challenge of adventurous activities in an adaptive and nurturing environment.

Address: Little Crosthwaite, Keswick, Cumbria, CA12 4QD **Tel:** 01768 772 255 **Email:** enquiries@calvertlakes.org.uk

Website: www.calvertlakes.org.uk

Lazarehab Ltd E4

Lazarehab Ltd is the exclusive distributor in the United Kingdom for Hernik postural car seats. Our range of postural car seats is specially designed for children with special needs and is available for babies from 0 year old to teenagers up to 75 Kg (11.3 stones).

Address: 32 Pople Drive, Alconbury Weald, Cambridgeshire, PE28 4XU **Tel:** 07534 577 583

Email: info@lazarehab.com **Website:** www.lazarehab.com

Leckey A17

Through early intervention, childhood and right up to adulthood, Leckey's experienced team of designers and clinicians work together to develop exciting innovative products that make a real difference to the quality of life for children and their families.

Address: 19C Ballinderry Road, Lisburn, Antrim, BT28 2SA **Tel:** 02892 678 879

Email: louise.hanna@leckey.com

Website: www.leckey.com

Lewis Reed CZ7

Lewis Reed are the market leaders in providing unique and quality wheelchair accessible vehicles for wheelchair users. They will be exhibiting their unique SEAT Alhambra at the show available as a passenger WAV but is also available as a transfer to drive vehicle.

Address: Unit 2 Plantation Court, Plantation Road, Brombrough, Wirral, CH2 3QR **Tel:** 08002 471 001

Email: sales@lewisreedgroup.co.uk

Website: www.lewisreedgroup.co.uk

Lifeways Community Care Ltd C30

Our vision is to help people live ordinary, independent and happy lives through extraordinary support. Lifeways provides specialist, person-centred support to 5,000 adults across the UK, through supported living, residential services and short breaks & respite.

Address: Mitchell House, King Street, Chorley, Lancashire, PR7 3AN **Tel:** 01257 202934

Email: jennifer.allen@lifeways.co.uk

Website: www.lifeways.co.uk

Loopwheels D20

Loopwheels are the best vibration reducing wheels for wheelchairs in the world, and two new lightweight Loopwheels (Urban and Extreme) launch in January. We provide 'Loopwheels Clinical Indications' to help clinicians get the wheels to the customers who will benefit the most. They work with all wheelchairs and are very important when using power attachments who travel further and faster over less even ground.

Address: Unit 202 Boughton Industrial Estate North, Boughton, Newark, Notts, NG22 9LD **Tel:** 01623 860 909

Email: ian.abbott@loopwheels.com

Website: www.loopwheels.com

LUSU Sports Ltd V17

We're LUSU and we have one purpose: to make activity inclusive for all. We've designed products, training programmes and materials for people with disabilities and those who work with them. Our LUSU Kit provides adapted equipment and LUSU Training provides information for Teachers, Parents and Coaches. Come and meet the team on our stand.

Address: 106 Mount Street, Cleckheaton, West Yorkshire, BD19 3QL **Telephone:** 07971 985 143 / 07951 588 399

Email: info@lususports.com

Website: www.lususports.com

Manchester Airport E6

Manchester Airport is a global gateway and the largest airport outside London with over 210 destinations served by 70 airlines. MAG serves more than 60 million passengers and handles almost half a million tonnes of air freight every year through its ownership and operation of the airports of London Stansted, Manchester and East Midlands.

Address: Olympic House, Manchester Airport, Manchester, Greater Manchester, M90 1QX **Tel:** 07711 574 427

Email: ashley.horsfall@manairport.co.uk

Website: www.manchesterairport.co.uk

McElmeel Mobility Services Limited CZ1, CZ2 & CZ8

McElmeel Mobility Services was established in 1950 and have developed from our modest beginnings to become a leading provider of wheelchair accessible vehicles and adaptations throughout the UK and Ireland. As a family run business, we are passionate about our customers and strive to continually give the best support and advice we can.

Address: 15 Ballyscandal Road, Armagh, BT61 8BL

Tel: 08237 525 333 **Email:** nadine@mobility-services.com

Website: www.mobility-services.com

Medimotion Limited A5

Established over 20 years ago, Medimotion Limited has built a strong reputation as provider of high quality therapy equipment to schools, colleges, NHS paediatric physiotherapy individuals, the NHS, therapy centres, private organisations and throughout Great Britain.

Address: Gwastod Abbot, New Inn, Pencader, Carmarthenshire, SA39 9AZ **Tel:** 01559 384 097

Email: sales@medimotion.co.uk

Website: www.medimotion.co.uk

Medpage Limited T/A Easylink UK D1

Medpage Limited specialise in the design and manufacture of products to aid caring for people with epilepsy, autism, SEN and cognitive impairments. Visit our stand to view our latest products. We always offer products for sale on the day with generous show discounts. Our free to enter prize draw is always popular.

Address: 3 Melbourne House, Corby Gate Business Park, Corby, Northants, NN17 5JG **Tel:** 01536 264 869

Email: sales@easylinkuk.co.uk

Website: www.medpage-ltd.com

MERU C27

MERU is a UK charity that designs and makes specialist assistive products for disabled children and young people. Come and try Bugzi, our tiny powered wheelchair available on a FREE loan scheme from a centre near you. We also have new switch adapted toys, Flexzi gadget stands and much more. Did you know we can switch adapt your toys too?

Address: MERU, Unit 2, 30 West Hill, Epsom, Surrey, KT19 8JD **Tel:** 01372 725 203 **Email:** info@meru.org.uk

Website: www.meru.org.uk

Mobility For You Ltd B14

Exhibiting our Hoggi range of innovative mobility products for children and teenagers, including the Bingo Evolution, Zip, Swingbo-VTi, Cleo & Cesa ultralight active wheelchairs, the new Sherpa mobility base and Medifab SPEX wheelchair seating.

Address: Brook House, 501 Crewe Road, Sandbach, Cheshire, CW11 3RX **Tel:** 01784 451 258

Email: andrew@mobilityforyou.co.uk

Website: www.mobilityforyou.co.uk

Moorings Mediquip UK Ltd C9

Moorings Mediquip are a leading supplier to the healthcare industry in UK and Ireland. The Company is the exclusive distributor in the UK and Ireland for a large range of products. Depending on location it includes Seating, Sensory Equipment, Walkers and Stenders, Trikes, Buggies, Wheelchairs and Sleep Systems.

Address: 51 Slaght Road, Ballymena, Co Antrim, BT42 2JH **Tel:** 02825 632 777

Email: colin@mooringsmediquip.com

Website: www.mooringsmediquip.com

More Rehab Ltd D5

More Rehab Ltd is a multi-disciplinary rehabilitation company. We provide physiotherapy, hydrotherapy, postural management, occupational therapy and speech and language therapy for children and young adults. We are passionate about delivering high-quality rehabilitation with children and their families at the centre of all we do.

Address: Head office, 767-769 Abbeydale Road, Sheffield, South Yorkshire, S17 4FE **Tel:** 01142 353 150

Email: anna@morerehab.com

Website: www.morerehab.com

Motability B9

With the Motability Scheme, disabled people can use their mobility allowance to lease a new car, scooter or powered wheelchair. Insurance, maintenance and breakdown cover are all included in the lease and car adaptations are available. Parents and carers are able to join on behalf of a child aged three and above.

Address: Warwick House, Roydon Road, Harlow, Essex, CM19 5PX **Tel:** 0300 456 4566

Email: communications@motability.co.uk

Website: www.motability.co.uk

Mountain Trike D22

All Terrain Wheelchair Manufacturer.

Address: Wybunbury Road, Walgherton, Nantwich, Cheshire, CW5 7NG **Tel:** 07816 955 945

Email: tim@mountaintrike.co.uk

Website: www.mountaintrike.com

Murrays Medical Equipment B23

Veldinik4Kids bespoke wheelchairs, designed for all, standard, active & high dependency needs. Indoor, outdoor & off road use, the funkiest colours and themes available. Safety Sleeper, the original, safe space, for home, respite & travel. It's simple, neat, ideal for holidays or overnights & comes in 1 suitcase for free air travel.

Address: Unit 2, Maguire Court, Saxon Business Park, Stoke Prior, Worcestershire, B60 4AD **Tel:** 02891 877 951

Email: order@murraysmedical.co.uk

Website: www.murraysmedical.co.uk

National Star College V24

Founded in 1967, National Star is a UK-wide charity that prepares young people with disabilities for adulthood and supports them to realise their aspirations. From the world-class learning it provides via an Ofsted outstanding college to specialist therapies, residential services, work based training social enterprises.

Address: Ullenwood Manor Road, Cheltenham, Gloucestershire, GL53 9QU **Tel:** 01242 534 928

Email: npodmore@nationalstar.org

Website: www.nationalstar.org

Neater Solutions Ltd B25

For 30 years, Neater Solutions have provided independent eating and drinking assistive technologies. The Neater Eaters now have a contemporary design, enhanced functionality, and adapt to a wider range of client needs. We offer the most advanced eating assistive technology the V6 Robotic and will feature our popular mobile arm supports.

Address: 12 Burlington Road, Buxton, Derbyshire, SK17 9AL **Tel:** 01298 238 823

Email: stephen@neater.co.uk **Website:** www.neater.co.uk

Newlife Charity for Disabled Children C2

We provide thousands of items of equipment every year. Fast-tracking delivery, to prevent suffering and when time is very precious. Childhood cancers, birth defects, accidents, diseases and infections can all cause disability. They are affecting children and their families every day.

Address: Hemlock Way, Cannock, West Midlands, WS11 7GF **Tel:** 01543462777

Email: kstuart@newlifecharity.co.uk

Website: www.newlifecharity.co.uk

Newlifeable B17a

Newlifeable is operated by the UK and Ireland's leading equipment supplier Murray's Medical Equipment Ltd, working in partnership with Newlife the Charity. Together we offer families, statutory services and other charities, the opportunity to purchase quality, refurbished disability equipment previously destined for landfill.

Address: Unit 2, Maguire Court, Saxon Business Park, Stoke Prior, Worcestershire, B60 4AD **Tel:** 01527 871 924

Email: newlifeable@murraysmedical.co.uk

Website: www.newlifeable.co.uk

Oakwood Academy V33

Oakwood Academy 6th Form is a bespoke SEND college for young people with moderate and complex learning difficulties and disabilities in the heart of Media City, Salford Quays. We offer vocational qualifications in Catering, Sport, ICT/Media, Performing Arts, Childcare and work experience.

Address: Chatsworth Road, Ellesmere Park, Eccles, Manchester, M30 9DY **Tel:** 0161 921 2880

Email: eelsey@oakwoodacademy.co.uk

Website: www.oakwoodacademy.co.uk

Ontex Healthcare A10

We are one of the world's leading suppliers of disposable incontinence products for all ages, we are proud to make a difference to the daily lives of people across every generation. We design, manufacture and deliver products to retailers and healthcare providers in more than 110 countries.

Address: Priors Haw Road, Corby, Northants, NN17 5JG **Tel:** 01536 207 060 **Email:** alex.shaw@ontexglobal.com

Website: www.id-direct.com

Osprey Healthcare D23

Osprey Healthcare Limited is a leading supplier of all types of disability equipment including adult and paediatric hoist slings, mobile hoists and standing aids, shower chairs, tilt in space shower cradles and chairs, Timo UK shower trolleys, wall mounted shower stretchers, changing plinths and bariatric solutions.

Address: Unit 108-110, Bradley Hall Trading Estate, Bradley Lane, Standish, Wigan, Greater Manchester, WN6 0XQ **Tel:** 01257 425 623

Email: emilys@ospreyhealthcare.com

Website: www.ospreyhealthcare.com

Otto Bock Healthcare PLC B16

Celebrating its 100th anniversary in 2019, Ottobock is a world-leading supplier of high quality, innovative and practical mobility solutions to help people rediscover their independence.

Address: 32 Parsonage Road, Englefield Green, Egham, Surrey, TW20 0LD **Tel:** 01784 744 900
Email: charlotte.brown@ottobock.com
Website: www.ottobock.co.uk

Peeps V22

A registered charity, supporting those affected by HIE (hypoxic-ischaemic encephalopathy) and raising awareness.

Address: 39 Ladysmith Road, Ashton-under-Lyne, Lancashire, OL6 9BZ **Tel:** 07877 312 189
Email: info@peeps-hie.org **Website:** www.peeps-hie.org

Phab V15

Phab inspires and supports disabled and non-disabled children, young people and adults to make more of life together - breaking down barriers, reducing social isolation, and creating opportunities via social clubs and residential holiday projects.

Address: Summit House, Wandle Road, Croydon, Greater London, CR0 1DF **Tel:** 01254 824 784
Email: rebecca.hargreaves@phab.org.uk
Website: www.phab.org.uk

Pods Play F19

Pop up themed sensory spaces.

Address: 69 Charlesford Avenue, Kingswood, Kent, ME17 3PH **Tel:** 07966 871 345
Email: alex@optixevents.com
Website: www.podisplay.com

PosAbility Magazine D9

PosAbility is the UK's leading disability lifestyle magazine. Each issue covers topical issues, explores accessible holiday ideas, showcases the work and achievements of young disabled people, features fantastic columns from leading voices in the disabled community and offers readers amazing competitions. Get your copy today!

Address: 2A Publishing, Caledonia House, Evanton Drive, Thornliebank Industrial Estate, Glasgow, G46 8JT
Tel: 0141 465 2960 **Email:** enquiries@2apublishing.co.uk
Website: www.posabilitymagazine.co.uk

Pressalit A19

Pressalit manufactures stylish bathroom solutions that promote independence for individuals and safe working environments for carers. Products from our range include height adjustable washbasins, toilets, changing benches and shower seats. Pressalit are happy to provide a free design and quotation service.

Address: 100 Longwater Avenue, Green Park, Reading, Berkshire, RG2 6GP **Tel:** 0118 923 2696
Email: uk@pressalit.com **Website:** www.uk.pressalit.com

Price Slater Gawne D13

Price Slater Gawne is an Altrincham based law firm, operating throughout England and Wales. The firm specialise in Medical Negligence, Court of Protection, Serious Injury, Family Law and Wills, Trusts and Probate. Meet the team at stand D13 of the Kidz to Adultz North show.

Address: 1 The Downs, Altrincham, Cheshire, WA14 2QD
Tel: 0161 615 5554 **Email:** tom.young@psg-law.co.uk
Website: www.psg-law.co.uk

Quantum Rehab working with RKS Occupational Therapy Services B22

Quantum Rehab are working with RKS Occupational Therapy Services to offer a range of paediatric, mid-range and bariatric power chairs. There will be free on-stand expert advice, free assessments and more!

Address: 32 Wedgewood Road, Bicester, Oxfordshire, OX26 4UL **Tel:** 07881 506 136
Email: nycole@pride-mobility.co.uk
Website: www.quantumrehab.co.uk

Queen Alexandra College (QAC) V5

QAC is a national residential College based in Birmingham that supports a diverse range of student abilities and needs aged 16 and above. We offer an innovative, holistic approach to learning and support. Students may access study programmes at entry level, or gain vocational qualifications to level 3 in a wide range of subject areas.

Address: Court Oak Road, Harborne, Birmingham, West Midlands, B17 9TG **Tel:** 0121 428 5041
Email: info@qac.ac.uk **Website:** www.qac.ac.uk

Queen Elizabeth Foundation Accessible Aviation C27a

At QEF Accessible Aviation we directly support people considering flights who need practical help and advice, including our unique Tryb4uFly assessment. This guides you through the journey in a realistic cabin environment where you can try equipment and investigate options for you to remain comfortable throughout your flight.

Address: Leatherhead Court, Woodlands Road, Leatherhead, Surrey, KT22 0BN **Tel:** 01372 841 100
Email: graham.race@qef.org.uk
Website: www.qef.org.uk/our-services/accessible-aviation

R Healthcare D16

R Healthcare is showing the innovative ToDo power assist device which can provide a power assist to manual wheelchairs, weighing only 4.5kg the entire device can be left fitted to the wheelchair and activated by simply engaging the drive unit.

Address: Building 2, Philips Campus, Wellhall Road, Hamilton, South Lanarkshire, ML3 9BZ
Tel: 08451460600 **Email:** sales@rhealthcare.co.uk
Website: www.rhealthcare.co.uk

Redbank House (Part of Disabled Living) DL1

Redbank House is Disabled Living's Health and Social Care Hub in Cheetham, North Manchester. We are a modern and accessible venue offering spacious and vibrant facilities. Our venue has flexible rooms, sensory rooms and office accommodation.

Address: 4 St Chad's Street, Manchester, Greater Manchester, M8 8QA **Tel:** 0161 214 5959
Email: info@redbankhouse.com
Website: www.redbankhouse.com

Remap Innovation Hub

Remap is a charity that helps disabled people of all ages to live more independent lives. Our network of skilled volunteers design and custom-make equipment free of charge.

Address: D9 Chaucer Business Park, Kemsing, Sevenoaks, Kent, TN15 6YU **Tel:** 07921 854 071
Email: d.martin@remap.org.uk
Website: www.remap.org.uk

Remotion Ltd B18a

Be free-er in the way you move with the Mollii Suit. Experience the whole-body benefits of the Mollii Suit's sub-threshold electrical stimulation, enabling the body to relieve its own muscle and movement disorders. Used for adults/children to relieve the effects of neurological disorders such as spasticity, muscle rigidity and stiffness.

Address: The Island, Steep, Petersfield, Hampshire, GU32 1AE **Tel:** 01730 269 000

Email: milesatton@remotion.co.uk

Website: www.remotion.co.uk

RGK Wheelchairs D12

Sport and daily made to measure wheelchairs.

Address: Units 8 a/b/c, Burntwood Industrial Estate, Burntwood, Staffordshire, WS7 3JQ **Tel:** 01543 678 165

Email: patriciab@rgkwheelchairs.com

Website: www.rgkwheelchairs.com

RMS Ltd C23

Our commitment is to support our customers by providing innovative and practical solutions for daily life. We offer an extensive range of products; bespoke manufacture and a free assessment service.

Address: Thompson House, Unit 10, Styles Close, Sittingbourne, Kent, ME10 3BF **Tel:** 01795 477 280

Email: katie@rms-kent.co.uk

Website: www.ineedawheelchair.co.uk

Rompa Ltd A1

Rompa® provide a wide range of sensory equipment to benefit people with hidden disabilities. With over 30 years' experience, Rompa® was the original company to bring the concept of Snoezelen® Multi-Sensory Environments to the UK.

Address: Goyt Side Road, Chesterfield, Derbyshire, S40 2PH **Tel:** 01246 211 777 **Email:** sales@rompa.com

Website: www.rompa.com

Ruskin Mill Trust V12

Ruskin Mill Trust are a specialist day and residential education provider for young people and adults in England, Wales and Scotland. Since 1987 the Trust's Practical Skills Therapeutic Education (PSTE) method has enabled learners to overcome barriers to learning, become skilled, and return to their communities with greater independence.

Address: Freeman College, 88 Arundel Street, Sheffield, South Yorkshire, S1 2NG **Tel:** 07875 555 502

Email: julie.marriott@rmt.org **Website:** www.rmt.org

Safespaces C11

Safespaces create light, pleasant, yet robust, safe living and sleeping environments for adults & children with a range of complex needs, including autism, epilepsy & behaviours that challenge. We offer attractive, calm custom-made safe rooms, sleep systems, hi-lo & travel options, plus rental, trial, cleaning & refurbishment service.

Address: 361 Burnley Road, Todmorden, Lancashire, OL14 7DH **Tel:** 01706 816 274

Email: enquiries@safespaces.co.uk

Website: www.safespaces.co.uk

Scan Mobility Limited B20

Scan Mobility Ltd has been serving both the Health and private communities since 1993. Our staff offer a quality, reliable and dependable service and are happy to help you with any products including ScanTurn Mattress, paediatric beds, cots and pressure area care. Please view our new range in B-Dermofresh Bedding.

Address: Marsh House, 90 Ralph's Wife's Lane, Banks, Southport, Merseyside, PR9 8ER

Tel: 01704 233 344 **Email:** info@scanmobility.co.uk

Website: www.scanmobility.co.uk

Schuchmann LLP C13a

Schuchmann have an excellent paediatric product range of innovative high quality products which have stood the test of time in seating, standing, walking and bathing, each with their own unique points which set them aside from others. We are committed to assisting therapists and carers, to provide the highest level of service and support.

Address: 3 Lakeside Court, Kingston Park, Flaxley Road, Peterborough, Cambridgeshire, PE2 9FT

Tel: 07984 649 723 **Email:** vb@schuchmann.co.uk

Website: www.schuchmann.co.uk

Seashell Trust V18

Seashell Trust provides education, care, short breaks & sport services to children & young people with complex learning & communication needs. Through our Outreach Services, we deliver a comprehensive range of training, consultancy and advice to help organisations more effectively support children and young people with complex needs.

Address: Stanley Road, Cheadle Hulme, Cheshire, SK8 6RQ **Tel:** 0161 610 0151

Email: sian.cash@seashelltrust.org.uk

Website: www.seashelltrust.org.uk

Seenin Ltd A11

Seenin offers stylish clothing & accessories designed for children & adults with disabilities. As one of the UK's leading adaptive clothing brands for special needs our product range includes aprons, bibs, kerchiefs, sleepwear, wheelchair covers, changing mats, gloves & bespoke items which provide comfort and make everyday tasks easier.

Address: Aydon, Corbridge, Northumberland, NE45 5PL

Tel: 01434 634 457 **Email:** info@seenin.co.uk

Website: www.seenin.co.uk

SEN Magazine Ltd A8

SEN Magazine is the leading magazine in the UK for parents / carers and all SEN Professionals! Keep up to date with the latest ideas and best practice in all areas of SEN. Find useful resources, share practical tips, read expert articles and have your say. Visit our stand for a Special half price Show offer on subscriptions.

Address: Chapel House, 5 Shawbridge Street, Clitheroe, Lancs, BB7 1LY **Tel:** 01200 409 800

Email: info@senmagazine.co.uk

Website: www.senmagazine.co.uk

Sense Specialist Services for Children and Young People V26

Our work focusses on ensuring that every individual who is deafblind has their unique needs recognised and that they have access to opportunities to play, communicate, socialise, learn and develop. Specialist input is always planned with the young person and their family and is individualised depending on the young person/family's needs.

Address: Pemberton House, 122 Westgate, Wakefield, West Yorkshire, WF1 1XP **Tel:** 07788 319 074

Email: jade.cracknell@sense.org.uk

Website: www.sense.org.uk

Shine V25

Shine is a national charity that provides specialist support from before birth and throughout the life of anyone living with spina bifida and/or hydrocephalus, as well as to parents, families, carers and professional care staff. Shine enables people to get the best out of life. Shine was previously known as ASBAH.

Address: 42 Park Road, Peterborough, Cambs, PE1 2UQ **Tel:** 01733 555 988

Email: firstcontact@shinecharity.org.uk

Website: www.shinecharity.org.uk

Slater and Gordon Lawyers D19

Slater and Gordon is one of the UK's leading consumer law firms. Our goal is to deliver exceptional, world class legal services in all aspects of injury and negligence, with offices throughout the UK.

Address: 58 Mosley Street, Manchester, Greater Manchester, M2 3HZ **Tel:** 08081 758 000

Email: sue.austin@slatergordon.co.uk

Website: www.slatergordon.co.uk/clinical-and-medical-negligence

Smile Smart Technology Limited D26

Smile Smart Technology Ltd are the manufacturer of the Smart platform and wheelchair range. We also specialise in customising wheelchairs and controls to fit the needs of the user. For the past nine years we have been supplying and fitting special switch mounts, tablet mounts and the Rehadapt communication aids range.

Address: The Flour Barn, Frilsham Home Farm, Yattendon, Newbury, Berkshire, RG18 0XT

Tel: 0163 537 550 **Email:** tech@smilesmart-tech.com

Website: www.smilesmart-tech.com

Smirthwaite Ltd B19

At Smirthwaite we just love to make things easier for children of all ages with special needs. There's a passion behind everything we design and we aim to leave parents and children alike with that 'wow' factor! Our expert designers are never happy with average, come and see for yourself!

Address: 16 Wentworth Road, Heathfield, Newton Abbot, Devon, TQ12 6TL **Tel:** 01626 831 829

Email: info@smirthwaite.co.uk

Website: www.smirthwaite.co.uk

Specialised Orthotic Services C16

Our vision is to provide the best possible innovative special seating systems, and other rehabilitation products to aid mobility and daily living, coupled with a quality service to our clients no matter how complex their disabilities.

Address: Units 126-127, Fauld Industrial Park, Fauld Lane, Tutbury, Staffordshire, DE13 9HS **Tel:** 01283 520 400

Email: blamburn@specialorthotic.com

Website: www.specialisedorthoticservices.co.uk

SpecialKids.Company A24

Specialists in adaptive clothing and accessories for older children and young adults with special needs. Our clothing range caters for strippers, dippers, smearers and shredders including PEG Fed kids. Other products include swimwear, bibs, bedding, incontinence products, wheelchair accessories and much more!

Address: Unit 5 Union House, Union Drive, Sutton Coldfield, West Midlands, B73 5TN **Tel:** 0121 354 5142

Email: sasha@specialkids.company

Website: www.specialkids.company

SpokeGuards F15

We design and manufacture spoke guards for wheelchairs. Whether you call them spoke guards, wheel trims or wheel protectors, we print your favourite image to personalise the wheelchair to make you stand out in the crowd. We have published designs to choose from, but would you like to 'Design Your Own'? If you would, give us a call.

Address: 59 Park View, Kettering, Northamptonshire, NN16 9RJ **Tel:** 07584 207 019

Email: frank@spokeguards.co.uk

Website: www.spokeguards.co.uk

Stockport Foster Carers Association V30

Foster carers who look after Stockport Council children with special educational needs and work with Parents in Partnership.

Address: 3rd floor, Stopford House, Stockport, SK1 3XE

Tel: 0161 474 3400

Email: jackie.gould@stockport.gov.uk

Website: www.stockport.gov.uk/fostering

SWAN UK (Genetic Alliance UK) V20

SWAN UK is a support network run by Genetic Alliance UK that provides information and support to families of children and young adults with undiagnosed genetic conditions.

Address: 49-51 East Road, London, N1 6AH

Tel: 020 7831 0883

Email: isabel.rundle@geneticalliance.org.uk

Website: www.undiagnosed.org.uk

Symmetrikit Postural Care F1

Symmetrikit Postural Care has been leading the way in the Design, Manufacture and Supply of Postural Care Solutions, worldwide, for over 20 years. More recently, we have introduced Early Intervention Solutions, specifically for 0-5 year olds, focusing on 24 hour Postural Care.

Address: The Helping Hand Company, Bromyard Road, Ledbury, Herefordshire, HR8 1NS **Tel:** 01531 635 388

Email: sales@symmetrikit.com

Website: www.symmetrikit.com

TBC Conversions Ltd CZ3 & CZ6

TBC Mobility Conversions is one of the leading conversion companies. All vehicles are designed and converted with intelligence, empathy and care and we believe that all drivers and passengers are entitled to the same level of safety and comfort.

Address: 50 Far Circular Road, Dungannon, Tyrone, BT71 6LW **Tel:** 0800 999 5090

Email: info@tbconversions.com

Website: www.tbconversions.com

Techcess Communications B17

Techcess is dedicated to helping people with little or no speech communicate more effectively. Driven by the satisfaction of our users, we passionately supply & support innovative 'talking technology'. We work to find the most appropriate technology for the user. We supply access peripherals, such as eyegaze and other access products.

Address: Caunt Road, Springfield Business Park, Totemic House, Grantham, Lincolnshire, NG31 7FZ

Tel: 01476 561 991 **Email:** jake.rourke@techcess.co.uk

Website: www.techcess.co.uk

The Children's Sleep Charity V14

The Children's Sleep Charity offers sleep support to families of all children over the age of 12 months across England and Wales. Practitioners have a specialism in supporting children and young people with SEND. The Charity also offer a range of training packages to professionals, services and settings.

Address: Kale Lodge, Woodfield Park, Tickhill Road, Balby, Doncaster, South Yorkshire, DN4 8QP

Tel: 01302 751 416

Email: info@thechildrenssleepcharity.org.uk

Website: www.thechildrenssleepcharity.org.uk

The Joshua Wilson Brain Tumour Charity F12

The Joshua Wilson Brain Tumour Charity help children who have or have-had a brain tumour, we support their families with advice, emotional guidance and financial solutions, with special focus on those who also have post-surgery disabilities. All this is done in Joshua Wilson aka SuperJosh's legacy.

Address: Bury Business Lodge, Europa House, Barcroft Street, Bury, Greater Manchester, BL9 5BT
Tel: 0161 763 8787 **Email:** kat@joshwilson.org.uk
Website: www.joshwilson.org.uk

The Makaton Charity V31

Makaton is a language programme that combines signs, symbols and speech to ensure that everyone living with learning or communication difficulties has the tools and resources they need to understand and be understood. Makaton transforms lives by giving people a way to express themselves independently.

Address: Westmead House, Farnborough, Hampshire, GU14 7LP **Tel:** 07875 531 601
Email: sarah.drew@makaton.org
Website: www.makaton.org

The Movement Centre V19

The Movement Centre is a UK registered charity dedicated to supporting children and their families living with movement disabilities. We provide a specialist therapy called Targeted Training to help children gain movement control. Targeted Training therapy can enable children to develop new skills and become far more independent.

Address: Building 106, RJA Hospital, Oswestry, Shropshire, SY10 7AG **Tel:** 01691 404 248
Email: polly@themovementcentre.co.uk
Website: www.the-movement-centre.co.uk

The OT Magazine D9

The OT Magazine is a CPD-certified magazine that is dedicated solely to Occupational Therapists. The magazine showcases the amazing and innovative work undertaken by OTs in the UK and further afield. We explore emerging roles of Occupational Therapy, showcase products to aid independent living and feature columns from OTs.

Address: 2A Publishing, Caledonia House, Evanton Drive, Thornliebank Industrial Estate, Glasgow, G46 8JT
Tel: 0161 465 2960 **Email:** enquiries@2apublishing.co.uk
Website: www.ot-magazine.co.uk

The Partially Sighted Society V32

The Partially Sighted Society is a registered charity providing help, support, low vision assessments, aids and equipment to anybody living with sight loss. We are suppliers of specialist exercise books, planners and diaries and other equipment for the student with visual impairment or learning disabilities.

Address: 1 Bennetthorpe, Doncaster, South Yorkshire, DN2 6AA **Tel:** 01302 965 195
Email: anita@partisight.org.uk
Website: www.partisight.org.uk

The Sequal Trust V4

A national charity which fundraises to provide communication aids to disabled people of all ages throughout the UK, with speech, movement or severe learning difficulties.

Address: 3 Ploughman's Corner, Wharf Road, Ellesmere, Shropshire, SY12 0EJ **Tel:** 01691 624 222
Email: info@thesequaltrust.org.uk
Website: www.thesequaltrust.org.uk

Theraplay Ltd C22

Theraplay Ltd is a manufacturer of cycles for all abilities. All our cycles can be customised to the individual needs of each rider. Free assessments are available throughout the UK.

Address: 32 Welbeck Road, Darnley Industrial Estate, Glasgow, G53 7SD **Tel:** 01418 769 177
Email: info@theraplay.co.uk
Website: www.theraplay.co.uk

Theraposture Ltd B10

Market-leading supplier of adjustable Care Cots and Beds. Regularly recommended by OT's, Theraposture is considered first choice for reliable, quality care cots that deliver a remarkable improvement to the lives of many young disabled individuals, their families, friends and carers.

Address: Kingdom Avenue, Northacre Industrial Park, Westbury, Wiltshire, BA13 4WE **Tel:** 01373 823 030
Email: liam@theraposture.co.uk
Website: www.theraposture.co.uk

Together for Short Lives V6

When a child's life is expected to be short, there's no time to waste. Together for Short Lives is here to make sure the 49,000 seriously ill children across the UK make the most of every moment they have together, whether that's for years, months or hours. We stand with families, supporting them to make sure they get vital care and help.

Address: New Bond House, Bond Street, Bristol, BS2 9AG **Tel:** 08088 088 100
Email: info@togetherforshortlives.org.uk
Website: www.togetherforshortlives.org.uk

Treloar School and College V13

We provide outstanding education, care, therapy, medical support and independence training to young people with physical disabilities aged 2 - 25 years. Our non-maintained Nursery, School & College are on one site and we also offer flexible residential boarding options including weekly, termly and 52-weeks.

Address: Powell Drive, Holybourne, Alton, Hampshire, GU34 4GL **Tel:** 01420 547 400
Email: admissions@treloar.org.uk
Website: www.treloar.org.uk

Trustford A3

Trust Ford is the UK's largest dedicated Ford dealer network. Trustford have won several Motability awards on a national & regional level. Our aim is to raise awareness of the Motability scheme and showcase why Ford continues to be their number 1 choice. If you receive a Motability allowance, visit one of our sites to find out more.

Address: Trustford, Newcomen Way, Severalls Industrial Park, Colchester, Essex, CO4 9YA
Tel: 07899 065 012
Email: trustford.online@trustford.co.uk
Website: www.trustford.co.uk

Variety, the Children's Charity V1

Variety exists to improve the lives of children all over the UK who are affected by disability, disadvantage and ill-health. We provide funding for wheelchairs and specialist equipment to families, hospices and schools along with specially adapted, accessible transport and memorable experiences for young people aged 0 - 18.

Address: 93 Bayham Street, London, Greater London, NW1 0AG **Tel:** 02074 288 100
Email: info@variety.org.uk **Website:** www.variety.org.uk

The national organisation for wheelchair sport. We support and promote participation from potential Paralympians to those looking to try an activity for the very first time. WheelPower provide opportunities for disabled people to live healthy and active lives and help those to find sports which they are passionate about.

Address: Stoke Mandeville Stadium, Guttman Road, Stoke Mandeville, Buckinghamshire, HP21 9PP
Tel: 01296 395 995 **Email:** info@wheelpower.org.uk **Website:** www.wheelpower.org.uk

Introducing Wilbur Wheels

Written & Illustrated by Jim Ault

Wilbur Wheels will be a regular feature within the Kidz to Adultz Magazines from 2020.

Join in the colouring competition (near Santa's Grotto) for your chance to win one of many prizes!



Seashell Trust
 Communication for Life

Registered charity no. 1092655

Seashell Trust supports children and young people with complex learning and communication needs.

We provide **education and care** through our Ofsted outstanding school, specialist college and short breaks services, as well as a programme of **inclusive sports** for our community.

Seashell delivers a comprehensive range of **training, consultancy and advice** to help organisations more effectively support children and young people with complex needs.



TEL 0161 610 0100

EMAIL info@seashelltrust.org.uk

WEB www.seashelltrust.org.uk

Out now!



DON'T FORGET TO PICK UP A COPY OF THE KIDZ TO ADULTZ MAGAZINE AT THE SHOW!

*Also available online
through our website...*

www.kidzexhibitions.co.uk

